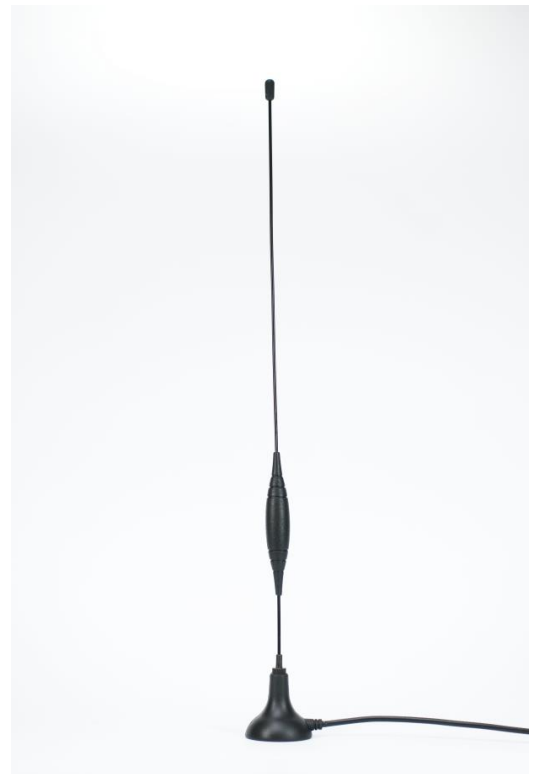


2J320M

(DATASHEET)

Type	Cell Antenna
Frequencies	GSM (900 MHz) DCS (1800 MHz) PCS (1900 MHz) 3G (UMTS 2.1 GHz)
Mounting	Magnetic Mount
Revision	00



1. SPECIFICATION

1.1. Electrical Specifications

Frequencies	GSM (900 MHz) DCS (1800 MHz) PCS (1900 MHz) 3G (UMTS 2.1 GHz)
Impedance	50 Ohms
Polarization	VERTICAL
Gain	5 dBi Max
VSWR*	<2:1
Power handling	30W
Operating temperature	-40°C to +85°C

*Measured with 250cm RG174 on metal ground

1.2. Connection Specification

Connector type: SMA Male

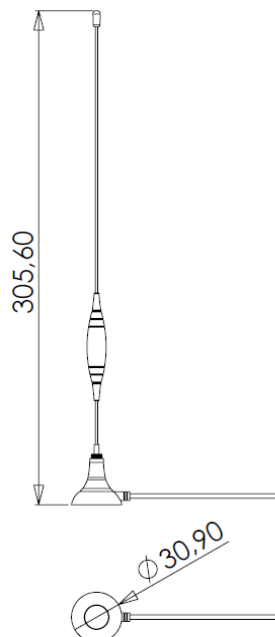
Cable: RG174U

Cable length: 250 cm

For different cable length and connector type ask our sales team.

1.3. Mechanical Specifications and Dimensions

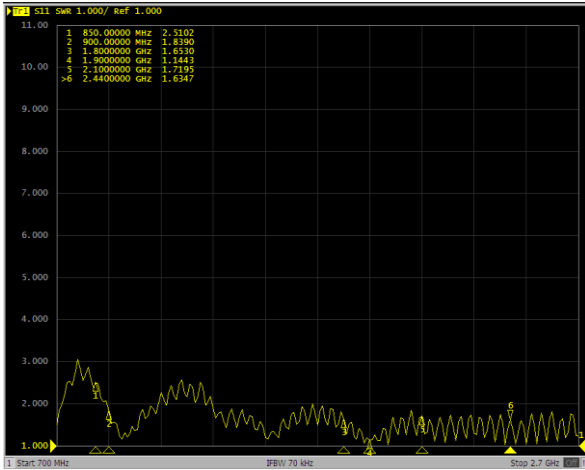
Material: ABS
 Max. dimensions: 30.9mm x 305.6mm (D x H)
 Weight: 60g 'weight with 2.5m RG174'
 Colour: Black (for different colours please ask our sales team)



2. MEASUREMENT

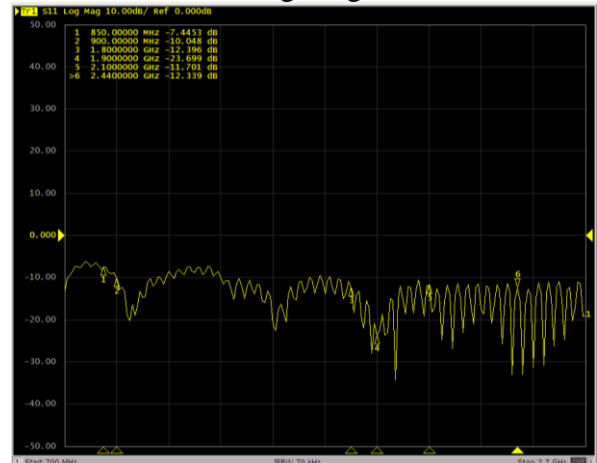
2.1. S11

VSWR



Tested with 250cm cable RG174 with SMA male

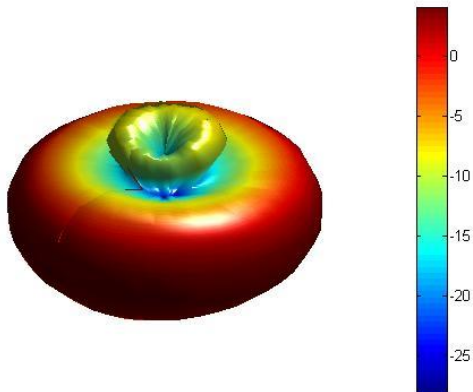
Log Mag



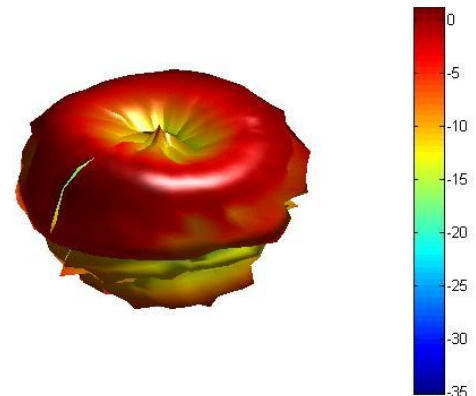
Tested with 250cm cable RG174 with SMA male

2.2. 3D radiation pattern

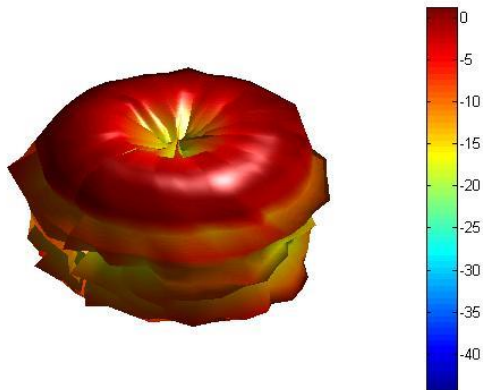
Freq = 0.907GHz Az= 45 EL= 45



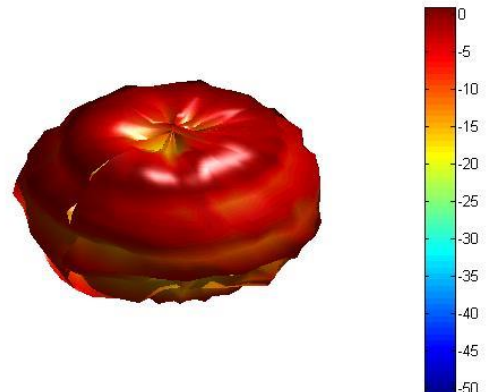
Freq = 1.807GHz Az= 45 EL= 45



Freq = 1.906GHz Az= 45 EL= 45



Freq = 2.104GHz Az= 45 EL= 45



3. IMAGES

